

# BERT FRANK

## RIDDLE SINGLE TABLE LAMP

### MAINTENANCE

- Lacquered brass shade should be wiped with a soft duster.
- Coloured parts can be wiped with a damp cloth (unplug from mains first).

### TECHNICAL

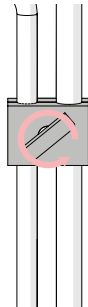
- 1 x G9 LED bulb

[www.bertfrank.co.uk](http://www.bertfrank.co.uk)

+44 (0)207 164 6482

### INSTALLATION

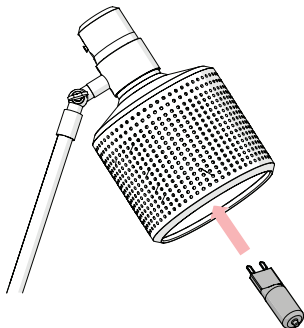
- 1**
- The arm of the lamp does not move vertically. It does rotate.
  - To adjust rotation angle firstly loosen the tightening blocks then move arm into desired location and tighten to secure.
  - Ensure that the arm of the light is supported as this is carried out.



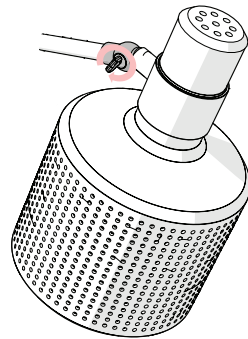
!! Be sure not to over loosen. !!

### BULB REPLACEMENT

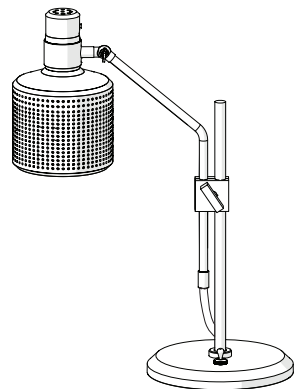
- 3**
- Replace G9 bulb by pushing them into lamp holder.



- 2**
- Turn the thumb screw on the side of the knuckle joint to adjust the angle of the shade up or down as desired.
  - This shade does not twist.



- 4**



---

This product is only suitable for connection to the native power supply to which the unit was specifically manufactured. It is for indoor use only, and not suitable for a bathroom location.

If the Class II, double insulated symbol is on the lamp, it does not require an Earth, and Live or Neutral must not be connected to Earth. If there is no such symbol, then the lamp must be Earthed.

Under no circumstances must this floor lamp be covered with any material as this could pose a safety hazard. It must be used on a stable, flat surface.

Never fit bulbs of a higher wattage than those specified on the label, as these may cause overheating and damage the fitting.

If the mains cable becomes damaged it must only be replaced by a technically competent, qualified person.

Allow 10 minutes to cool before replacing, adjusting or cleaning. Clean with a dry cloth only. Do not use liquid or abrasive cleaners on this product.

If you are in any doubt about your competence please consult a qualified electrician. If any modification is made it will invalidate the warranty and may render the product unsafe.

---